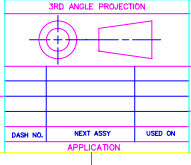


REV	BY	DESCRIPTION	DATE	APPROVED
01	ZHU	PROTOTYPE RELEASE	02/26/09	J.T.
03	ZHU	PER ECD #	1/19/10	

Redundant Kingpost Mounting Kit Parts List
BOM #12099

ITEM NO.	ZONE	MATERIAL/SPECIFICATION	DESCRIPTION	QTY	UNIT
10		STAINLESS STEEL	BOLT, M12 x2" SS	11832102	21
9		STAINLESS STEEL	WASHER SPLIT, M12 SS	11833002	21
8		STAINLESS STEEL	WASHER FLAT, M12 SS	11833102	42
7		STAINLESS STEEL	NUT, M12 SS	11832302	21
6		STAINLESS STEEL	WASHER SPLIT, M14 SS	11833151	12
5		STAINLESS STEEL	WASHER FLAT, M14 SS	11833150	14
4		STAINLESS STEEL	NUT, M14 SS	11832350	14
3		STAINLESS STEEL	FAB. U BOLT, THREADED RDD M14x11"BL, SS	33530	4
2		ALUMINUM	FAB. KINGPOST MOUNT KIT PART 2	33521	1
1		ALUMINUM	FAB. KINGPOST MOUNT KIT PART 1	33520	2



PROPERTY	VALUE
MATERIAL:	[1]
FINISH:	[2]
DO NOT SCALE	

SPECIFICATIONS:		LIST OF MATERIAL OR PARTS LISTS			
ALL DIMENSIONS ARE IN INCHES.	UNLESS NOTED OTHERWISE IN DIMENSIONS ARE IN MILLIMETERS.	ANACOM, Inc.			
TOLERANCES:	ANGLES ± 1°				
XX ± .04	[x0.05]	ASSY DWG, KINGPOST MOUNT KIT 400W ODU C-BAND			
XX ± .000	[x0.01]				
XX ± .005	[x0.075]	DRAWING NUMBER 33522			
XX ± .005	[x0.075]				
ALL SURFACES 63 EXCEPT AS NOTED		DRAWING NUMBER 33522			
DRAWN: ZHU DATE: 02/26/09	DESIGNED: J.T. DATE: 02/26/09				
DRAWN: ZHU DATE: 02/26/09	DESIGNED: J.T. DATE: 02/26/09	DRAWING NUMBER 33522			
DRAWN: ZHU DATE: 02/26/09	DESIGNED: J.T. DATE: 02/26/09				
DASH NO.	NEXT ASSY	USED ON	SCALE: NONE	FILE No. 33522031	SHEET 1 OF 1

PROPRIETARY INFORMATION
THE INFORMATION CONTAINED HEREIN IS TO BE USED FOR MANUFACTURING PURPOSES TO THE EXTENT PERMITTED BY ANY THIRD PARTY WITHOUT THE WRITTEN CONSENT OF ANACOM ENGINEERING, INC.