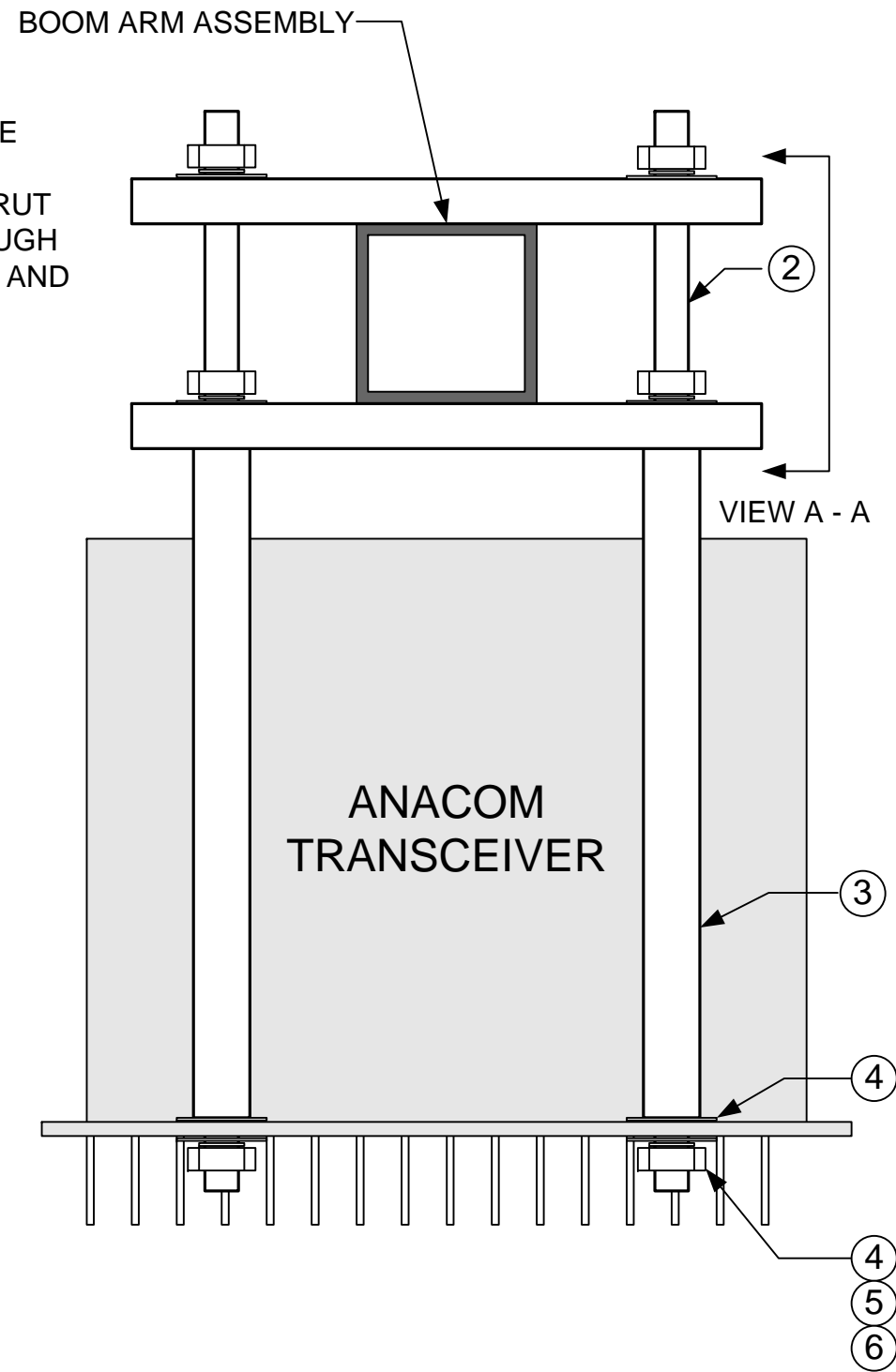
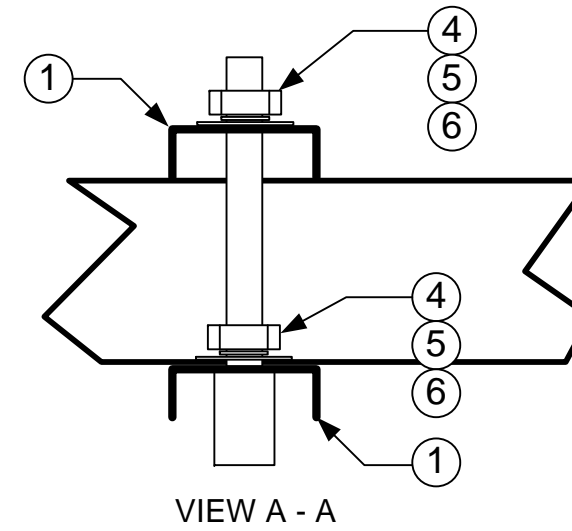


NOTE: THIS MOUNTING KIT IS COMPATIBLE WITH ALL ANASAT TRANSCEIVERS. USER MUST MAKE SURE THE BOOM ARM OR STRUT USED TO HOLD THE ODU IS STRONG ENOUGH TO SUPPORT THE TOTAL WEIGHT OF ODU AND CABLES.

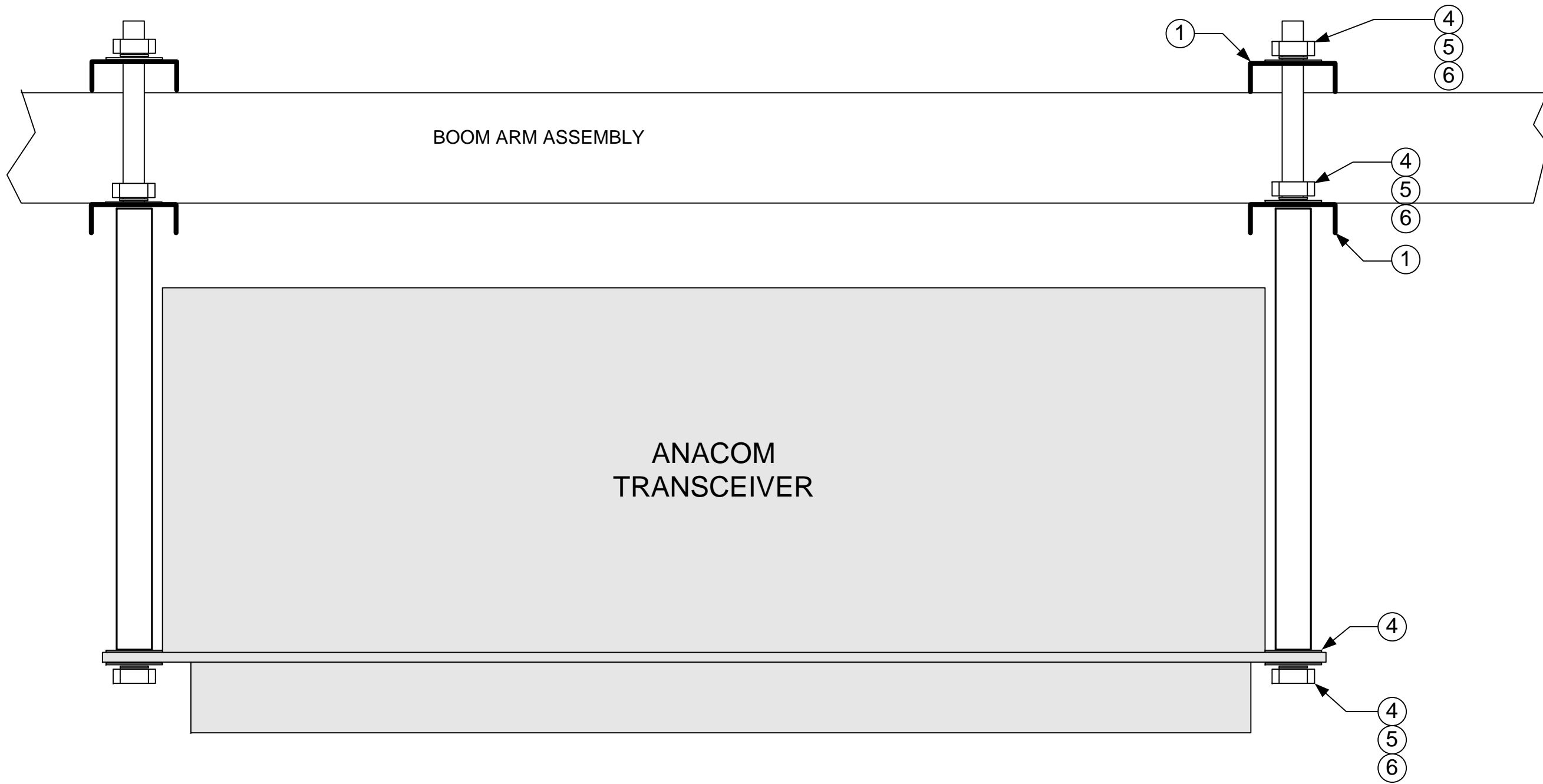


NOTE: UPPER CHANNEL CAN BE INVERTED TO ACCOMADATE LARGER BOOM SIZE IF NEEDED



Single Universal Mounting Kit Parts List _ 12104		
ITEM	Description	QTY
1	Channel	4
2	Threaded 3/8 rod, SS, 12in long	4
3	Tube, 7in x 0.7in dia, steel	4
4	Washer, flat, 3/8 SS	16
5	Washer, split, 3/8 SS	12
6	Nut, 3/8 SS	12

ANACOM INC.		
3000 Tasman Drive, Santa Clara, CA 95054		
Title ASSEMBLY DRAWING, SINGLE MOUNTING KIT		
Size B	Document Number 31626	Rev 2
Date: 22 APR 2005	Sheet 1 of 1	



ANACOM INC.		
3000 Tasman Drive, Santa Clara, CA 95043		
Title ASSEMBLY DRAWING, SINGLE MOUNTING KIT		
Size B	Document Number 31626	Rev 2
Date: 22 APR 2005	Sheet 2 of 2	